

# COMPANY PROFILE



شركة سماء المتخصصة لمواد البناء  
**SKY SPECIALIZED**  
FOR BUILDING MATERIALS

“ Quality In Every Solution ”

## Products & Services

Prince Sultan Road, Al Mohammadiyyah District, P.O.  
Box 7023, Jeddah 23625 Kingdom of Saudi Arabia

✉ [info@ssbm-sa.com](mailto:info@ssbm-sa.com)

## TABLE OF CONTENTS

S.#	DESCRIPTION	PAGE
01	ABOUT SKY SPECIALIZED BUILDING MATERIALS CO.	03
02	VISION & MISSION & AFTER SALES SUPPORT	04
03	COMPANIES WE REPRESENT IN KSA & MIDDLE EAST	05
04	PASSIVE FIRE PROTECTION PARTNERS - CANADA	06
05	CRAFCO INC. - USA	14
06	HYGT CHEMICAL GROUP	25
07	SSBM CONCRETE SEALER	36
08	LA BANCA DELLA CALCE SRL	39
09	DEWMARK EXPANSION JOINT SYSTEMS	43
10	UNISTRUT - UK	48
11	ROADTECHS GROUP	50
12	TENSAR INTERNATIONAL	53
13	REXMAR ENGINEERING - UK	56
14	HIGHWAY RESOURCE SOLUTIONS (HRS) LTD. - UK	62
15	380-750	65
16	AEROGREEN - USA	69
17	FASTRAC CONSTRUCTION PRODUCTS	72
18	STARKEM SRL - ITALY	74
19	TCE-ENVIRONMENTAL ENGG.	78
20	CO-MENDER INC. - CANADA	82
21	DOLENCO TUNNEL DRAINAGE SYSTEM	85
22	ADCOS-ADVANCE CONSTRUCTION SYSTEM-BELGIUM	87
23	PPW POLYPLAN - GERMANY	88

## About

### Sky Specialized Building Materials Co.

**Sky Specialized Building Materials Co.** is a sister concern of Sky Specialized Co. Ltd in Jeddah, Saudi Arabia.

**Sky Specialized Building Materials Co. (SSBM)** company is a leading supplier of high-quality construction chemicals, epoxy coatings, polyurea linings and coatings, passive fire stop systems, intumescent paints and fire retardant, fire barriers and fireproof cords, asphaltic bridge joints, mechanical joints, hot and cold applied sealants, melters/applicators, injection pumps, packers for resin and grouts, road marking machine, Unistrut channels, cable trays, ladders and fittings. With years of experience in the construction industry, we have earned a strong reputation for delivering reliable products and exceptional services. As a trusted partner to contractors, builders, engineers, and project owners, we are committed to providing comprehensive solutions that contribute to the success and durability of construction projects.

We supply the best quality products and services with the latest technology for the construction industry at affordable prices

#### Sky Specialized Building Materials Co. range of product and services includes :

- Epoxy Repairs and Adhesives
- Grouts, Injection and Soil Stabilizers
- Industrial Flooring & Coating Systems
- Polyurea Lining and Coating System
- Waterproofing Sealers & Concrete Protection Systems
- Injection Pump & Flooring Accessories
- Hot & Cold Applied Sealants, Melters /Cutters for Asphalt & Concrete
- Asphaltic Plug Joints / Expansion Joints
- Airport Runways & Taxiways Maintenance Products.
- Passive Fire Protection System
- Fire retardant, intumescent paints, Fire Barriers, Fireproof Cord.
- Road Marking Machines & Equipments
- Unistrut Channel, Cable Trays, Ladders & Fixings
- Tensar Geogrid System.
- Aerogreen specialty cleaners, runway rubber removal, façade cleaner.
- HYGTT SS21 Soil Stabilizer.
- Fastrac Resurfacer for Airports.
- TEC for Deconstruction & Environmental Engineering



## Our Vision:

Our vision is to be the leading provider of superior quality building materials, delivering exceptional value and service to our customers. We aim to contribute to the growth and success of the construction industry by supplying top-notch products that meet the highest standards of quality and durability.



## Our Mission:

At **Sky Specialized For Building Materials Co. (SSBM)** our mission is to be the preferred choice for construction professionals, offering a wide range of top-quality products and services. We strive to deliver innovative solutions, technical expertise, and outstanding customer support while upholding the highest standards of professionalism, integrity, and efficiency. Our goal is to foster long-term relationships with our clients based on trust, reliability, and mutual growth.

### **Supporting Your Construction Project:**

- Consultation and Technical Support
- Expert advice on product selection and specification
- Technical assistance and training
- Specification and compliance support

### **Efficient Supply Chain Management:**

- Timely procurement and delivering of materials
- Inventory management and just-in-time supply solutions
- Consolidated shipments for multi-product orders

### **After-Sales Support:**

- Warranty assistance and claims processing
- Product troubleshooting and technical assistance
- Proactive customer service to address concerns and inquiries

We established longer and closer working relationships with our Customers & Suppliers not only provide immediate and reliable services but to continually exceed expectations and goals. We create commercial flows, import and export products, arranging and managing international projects with our partners. Supported our network, we are able to integrate all these functions with our fruitful experience. Our numerous competencies allow us to respond to the needs of industries looking for a new market.

“ Quality In Every Solution ”



شركة سماء المميزة لمواد البناء  
**SKY SPECIALIZED**  
 FOR BUILDING MATERIALS

## WE REPRESENT THE FOLLOWING COMPANIES

<b>PASSIVE FIRE PROTECTION PARTNERS - CANADA</b>	
<b>CRAFCO INC. - USA</b>	
<b>HYGT CHEMICAL GROUP</b>	
<b>SSBM CONCRETE SEALER</b>	
<b>LA BANCA DELLA CALCE SRL</b>	
<b>DEWMARK EXPANSION JOINT SYSTEMS</b>	
<b>UNISTRUT - UK</b>	
<b>ROADTECHS GROUP - UK</b>	
<b>TENSAR INTERNATIONAL</b>	
<b>REXMAR ENGINEERING - UK</b>	
<b>HIGHWAY RESOURCE SOLUTIONS (HRS) LTD. - UK</b>	
<b>380-750</b>	
<b>AEROGREEN - USA</b>	
<b>FASTRAC CONSTRUCTION PRODUCTS</b>	
<b>STARKEM SRL - ITALY</b>	
<b>TCE-ENVIRONMENTAL ENGG.</b>	
<b>CO-MENDER INC. - CANADA</b>	
<b>DOLENCO TUNNEL SYSTEM</b>	
<b>ADCOS-ADVANCE CONSTRUCTION SYSTEM-BELGIUM</b>	
<b>PPW POLYPLAN - GERMANY</b>	

C  
O  
M  
P  
A  
N  
I  
E  
S



**Passive Fire Protection Partners** was created to develop and manufacture firestop compounds using "state of the art" technology to overcome deficiencies found in other products in today's market.

Passive Fire Protection Partners develops and manufactures firestop compounds that help protect life and property. Passive Fire Protection Partners has been making firestop materials since the industry's inception. For over 25 years we have been designing and improving our products while keeping in mind "Safety" and the "End User".

The company's products are tested and rated by Warnock Hersey, a division of Intertek Testing Services, Factory Mutual Research Corp., Omega Point Laboratories and by Underwriters Laboratories (UL).

Passive Fire Protection Partners works closely with our customers and contractors to help them succeed. In addition to our Firestop brand, Passive Fire Protection Partners could manufacture products under a private label. If you are interested in having a firestop product line under your brand name, please contact us at [firestop@firestop.com](mailto:firestop@firestop.com) below.

The Passive Fire Protection Partners product line is "job site" friendly, and offers significant benefits and substantial purchase savings for our customers.

### Our products are:

- Non-toxic and non-hazardous, assuring no harmful side effects to the applicator and end user.
- Faster and easier to install and clean up, resulting in significant cost savings to the contractor
- Water soluble prior to curing and waterproof when cured
- Superior for applying to damp surfaces
- Able to be applied to mildly contaminated surfaces
- High quality products available at extremely competitive prices.

Passive Fire Protection Partners was founded on the premise that through the development and use of non-toxic, easily installed firestop products, the firestop industry can achieve "SAFETY WITHOUT RISK".

With Passive Fire Protection Partners products, a new standard of safety and performance has been created throughout the passive fire protection industry.

“ Quality In Every Solution ”



شركة سماء المميزة لمواد البناء  
**SKY SPECIALIZED**  
FOR BUILDING MATERIALS



# **FIRESTOP**

## **Product and Listings Guide**

Passive Fire Protection Partners  
Toll Free: 1.800.810.1788  
[www.firestop.com](http://www.firestop.com)

**Version 7.0**

P  
F  
P  
  
P  
A  
R  
T  
N  
E  
R  
S

**Passive Fire Protection (PFP) Partners** is dedicated to providing firestopping products that are safe to use and easy to install. Our complete line of water-based firestop caulks and sprays means easier installation, easier clean up with no special handling or disposal requirements and lower exposure to volatile organic compounds (VOC's). When cured our firestopping products have been designed to remain flexible while forming a durable seal to help prevent the passage of smoke, fire and toxic fumes through fire-rated floor and wall assemblies.

## 4800DW



**4800DW** is our one-component, endothermic firestop caulking, which when fully cured produces a durable, flexible seal.

- Paintable (when cured with a latex based paint)
- Non-toxic-Safe to use
- Comprehensive listings-Some up to 4 hours
- Red color

## 4100NS



**4100NS** is our premium elastomeric latex-based firestop caulking. Its non-sag formulation and outstanding flexibility make it ideal for firestopping head-of-wall and control joints.

- Elastomeric – 33% compression and extension
- Paintable (when cured with a latex based paint)
- Non-toxic-Safe to use
- Gray color

## 3600EX



**3600EX** is our intumescent (expands when exposed to heat) acrylic based firestop caulking. **3600EX's** highly expansive formulation means that it will expand and seal around combustible service penetrations.

- Intumescent – Expands when exposed to high temperatures
- Paintable (when cured with a latex based paint)
- Non – toxic - Safe to use
- Red color

## 5100SP



**5100SP** is our spray brush applied elastomeric firestop sealant. **5100SP's** easy application and outstanding flexibility makes it ideal for firestopping construction joints.

- Sprayable – Fast and easy installation
- Elastomeric – 33% compression and extension
- Paintable (when cured with a latex based paint)
- Gray color

## 3500SI



**3500SI** is a latex – based, intumescent spray designed to stop the passage of fire, smoke and fumes through fire rated separation. **3500SI** spray forms a durable and flexible seal after curing.

- Sprayable – Fast and easy installation
- Elastomeric – 33% compression and extension
- Intumescent - Expands when exposed to high temperatures



## 4100SL



**4100SL** is our pourable, high performance firestop sealant. **4100SL's** one-component self-leveling formulation requires no special tooling and is ideal for firestopping floor penetrations.

- *Self-Leveling-no tooling*
- *Paintable (when cured with a latex based paint)*
- *Non-toxic-Safe to use*
- *Red color*

## 3300PS



**3300PS** is non-hardening, intumescent compound designed to seal through penetrations of electrical wires and cables in 1- and 2-hour fire-rated wall and floor assemblies. The 3300PS when exposed to heat will expand up to 3 times.

- *High Adhesion – Adheres to most common construction materials*
- *Intumescent – Expands when exposed to high temperatures*
- *Non - hardening – Reusable and retrofittable*
- *Red color*

## Putty Pads



**MP1** is a moldable fire rated intumescent putty pad. Use **MP1's** to restore the hourly rating of fire rated wall assemblies containing electrical outlet boxes. An additional benefit of using **MP1's** to sealing electrical outlet boxes is that it helps to restore the wall's acoustical performance.

- *Easy Installation – Apply by hand*
- *Intumescent – Expands when exposed to high temperatures*
- *Non – toxic - Safe to use*
- *Red color*

## WS-1



**WS1** is a flexible intumescent wrap strip used to firestop combustible and insulated pipe penetrations in fire-rated wall and floor assemblies.

- *Fast installation – No special tools required*
- *Intumescent – Expands when exposed to high temperatures*
- *Non – toxic - Safe to use*
- *Water Resistant – Non – Soluble*

## EBI-60



The **EBI-60** is a precut highly intumescent electrical box insert for use in electrical switches or receptacle boxes. The **EBI-60** has been designed to be installed inside the box. The **EBI-60** when exposed to high temperatures or flames will expand up to 24x its original volume.

- *Easy Installation – Just apply to the box's back wall*
- *Precut – No waste*
- *Intumescent - Expands when exposed to high temperatures*
- *Non – toxic - Safe to use*

## Pillows



The **Pillow** is a pliable brick shaped pillow, which makes it easy to firestop medium to large penetrations just stack and compress. When exposed to fire or high temperatures the highly intumescent **Pillow** will expand to seal around the penetrant(s) forming a solid barrier.

- *Easy Installation – Stack and compress*
- *Intumescent – Expands when exposed to high temperatures*
- *Non - hardening – Reusable and retrofittable*
- *Red color*

## PPC Collar



The **PPC Collar** is a pre-manufactured, one piece, powder coated, heavy steel device designed to constrict combustible pipe penetrations in fire-rated wall and floor assemblies. The **PPC Collar** are used to firestop an assortment of combustible pipes including ABS, ccABS, CPVC, FRPP, PVC, ccPVC & PP in both closed (process or supply) and vented (drain, waste or vent) piping systems.

- *High Quality – Pre - Manufactured*
- *Intumescent – Expands when exposed to high temperatures*
- *Easy to Install*
- *Red color*

## FCW-44



The **FCW-44** has been designed to stop the passage of fire, smoke and fumes through fire rated separations, while allowing easy access to install or remove cables. The FCW-44's two-piece design allows an easy retrofit solution to pre-existing cable installations.

- *Intumescent Core – Expands in volume to quickly close off voids and stop fire, smoke and heat*
- *Precut – No waste*
- *Intumescent - Expands when exposed to high temperatures*
- *Non – toxic - Safe to use*

“ Quality In Every Solution ”



شركة سماء المميزة لمواد البناء  
**SKY SPECIALIZED**  
 FOR BUILDING MATERIALS



P  
F  
P  
  
P  
A  
R  
T  
N  
E  
R  
S



**Passive Fire Protection Partners**  
 1412 Derwent Way  
 Delta, BC V3M 6H9  
 Canada  
 Toll Free: 1.800.810-1788  
 E-mail: [firestop@firestop.com](mailto:firestop@firestop.com)  
 Web Site: [www.firestop.com](http://www.firestop.com)



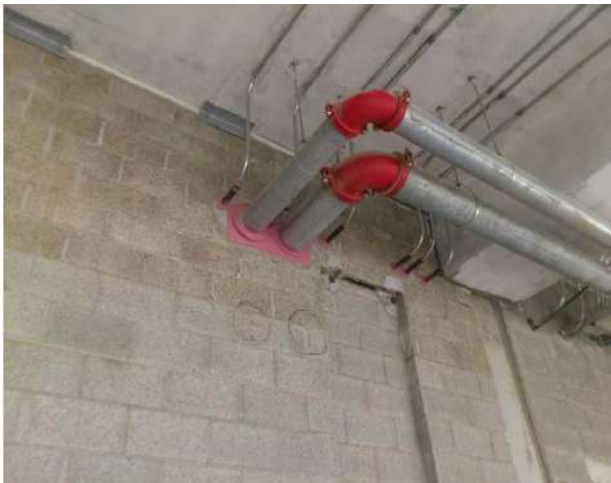
California State Fire Marshal

“ Quality In Every Solution ”



شركة سماء المميزة لمواد البناء  
**SKY SPECIALIZED**  
FOR BUILDING MATERIALS

### APPLICATION PICTURES



P  
F  
P  
  
P  
A  
R  
T  
N  
E  
R  
S

## Areas That Permit Fire Spread

- Through Penetrations
- Membrane Penetrations
- Blank Openings
- Construction Joints
- Perimeter Fire Barrier Systems
- Duct Enclosure Systems





Since 1976, **Crafco** has been recognized worldwide as the premier provider of pavement preservation products. This leadership comes from our vast knowledge of pavement and the challenges that come with the never-ending efforts to preserve them.

**Crafco** works closely with the State and Federal Highway Administrations, Airport Authorities and Town & Country Road Departments to recommend and advise them on the best product for their pavement conditions.

**Crafco** is the only company in the pavement preservation industry manufacturing quality application equipment as well as the consumable goods for all pavement maintenance needs.

## Products:

- **E-Z Pour Melters**
- **E-Z Series II Melter / Applicator**
- **Supershot Melter (60 / 125 / 250)**
- **Router Model 30 Pavement Cutter**
- **PolyPatch & Techcrete Repair Systems for Concrete and Asphalt**
- **Crafco Emulsion Storage Tanks**
- **Crafco Super Sealcoater**
- **Crafco Hot Applied Sealants**
- **Crafco Silicone Sealant**
- **Crafco Poreshield Concrete Protection**
- **Crafco Asphalt Protection System (Reclamite)**

## EQUIPMENTS

### CRAFCO SUPERSHOT 60

is a 60-gallon capacity unit, which features automatic digital controls. It is propane fired, with a heated hose and wand. This machine is designed for used on projects under 2,000 pounds of sealant per day. The Super Shot 60 is also available as a skid mount.



### CRAFCO SUPERSHOT 125

The mid-sized 125-gallon capacity offers the best versatility. Ideal for mid to large sized projects, this unit is diesel powered available with an optional compressor or a labor saving Auto Loader.



### CRAFCO SUPERSHOT 250

The oversized 250-gallon is designed for large projects. This machine will outperform any melter in its class and is available with many standard options.





**MODEL 30 PAVEMENT ROUTER**  
PN 21300



**MODEL 30 SELF PROPELLED PAVEMENT ROUTER**  
PN 21340



**MODEL 30 DUST CONTROL ROUTER**  
PN 21350



“ Quality In Every Solution ”



شركة سماء المميزة لمواد البناء  
**SKY SPECIALIZED**  
FOR BUILDING MATERIALS



Our mastic melter is designed specifically to melt mastic sealants. Our **Patcher II™** mastic melter keeps mastic temperatures within specifications at all times, and provides superior material agitation and aggregate suspension for a consistent material blend.



C  
R  
A  
F  
C  
O

“ Quality In Every Solution ”



شركة سما المتخصصة لمواد البناء  
**SKY SPECIALIZED**  
FOR BUILDING MATERIALS



CRAFCO EQUIPMENT

# ***EZ Mini Melter System***

## ***Pavement Preservation for Small Projects***



C  
R  
A  
F  
C  
O

“ Quality In Every Solution ”



شركة سماء المميزة لمواد البناء  
**SKY SPECIALIZED**  
FOR BUILDING MATERIALS

## APPLICATION PICTURES



**Crafcro Patcher II / Mastic One: Skin Patch Repair**



C  
R  
A  
F  
C  
O

“ Quality In Every Solution ”



شركة سماء المميزة لمواد البناء  
**SKY SPECIALIZED**  
FOR BUILDING MATERIALS



**CRAFCO SILICONE SEALANT**



C  
R  
A  
F  
C  
O

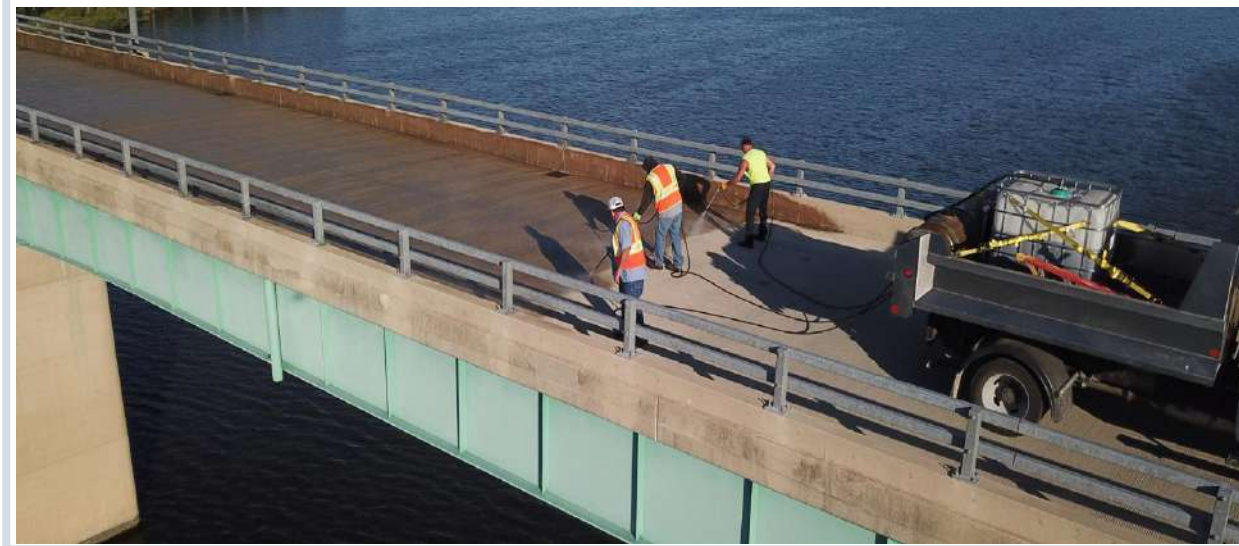
“ Quality In Every Solution ”



شركة سماء المميزة لمواد البناء  
**SKY SPECIALIZED**  
FOR BUILDING MATERIALS



**CRAFCO PORE SHIELD**



C  
R  
A  
F  
C  
O

“ Quality In Every Solution ”



شركة سماء المميزة لمواد البناء  
**SKY SPECIALIZED**  
FOR BUILDING MATERIALS



**FLEXIBLE PCCP SPALL REPAIR MATERIAL CRAFCO TECHCRETE**



C  
R  
A  
F  
C  
O

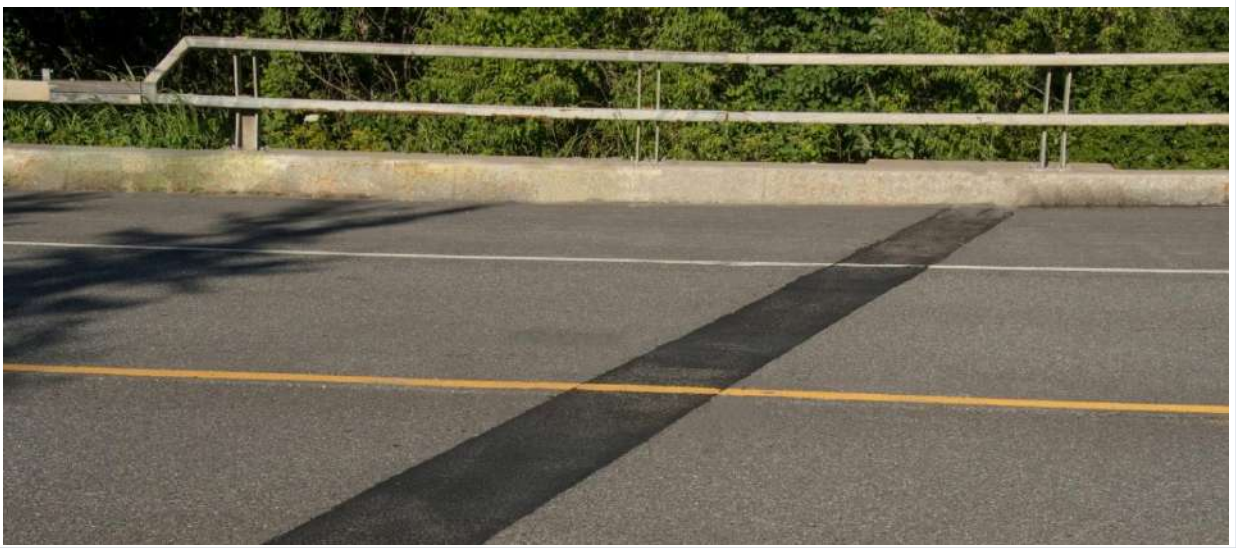
“ Quality In Every Solution ”



شركة سماء المميزة لمواد البناء  
**SKY SPECIALIZED**  
FOR BUILDING MATERIALS



**CRAFCO MATRIX 502-ASPHALTIC JOINT SYSTEM**



C  
R  
A  
F  
C  
O

“ Quality In Every Solution ”



شركة سماء المميزة لمواد البناء  
**SKY SPECIALIZED**  
FOR BUILDING MATERIALS



**CRAFCO HOT APPLIED CRACK & JOINT SEALANT**



C  
R  
A  
F  
C  
O





**HYGT CHEMICAL** It is born as a project of professionals from various chemical companies with extensive experience in the industry and is conceived with the objective of manufacturing and marketing industrial chemicals for the oil, mining and road construction industry, etc.

In recent years and with an emphasis on technical and commercial innovation, we have managed to provide solutions to our customers, consolidating a position in the market for chemical specialties, with the aim of perpetuating the quality of our products and the agility of the service. At **HYGT CHEMICAL** we have a solid team of professionals specialized in the following areas: Technical development, industrial development, technical and commercial advice, all of which are trained to guide the customer in the benefits of using our chemical specialties, trying to promote alternatives to the measure of each company to add value to each of their projects.



H  
Y  
G  
T  
  
C  
H  
E  
M  
I  
C  
A  
L

“ Quality In Every Solution ”



شركة سماء المميزة لمواد البناء  
**SKY SPECIALIZED**  
FOR BUILDING MATERIALS



# HyGT SS21

SS21 is a Sand Stabilizing product designed for Engineering purposes.

It has been formulated, tested and applied effectively in Coarse Grained soils and soils with low fines content.

Silty Soils, Sandy Soils and Gravelly soils turned into a "Mass", linked with SS21.

This process can be undone as well, coming back easily to the original situation by using other of our products.

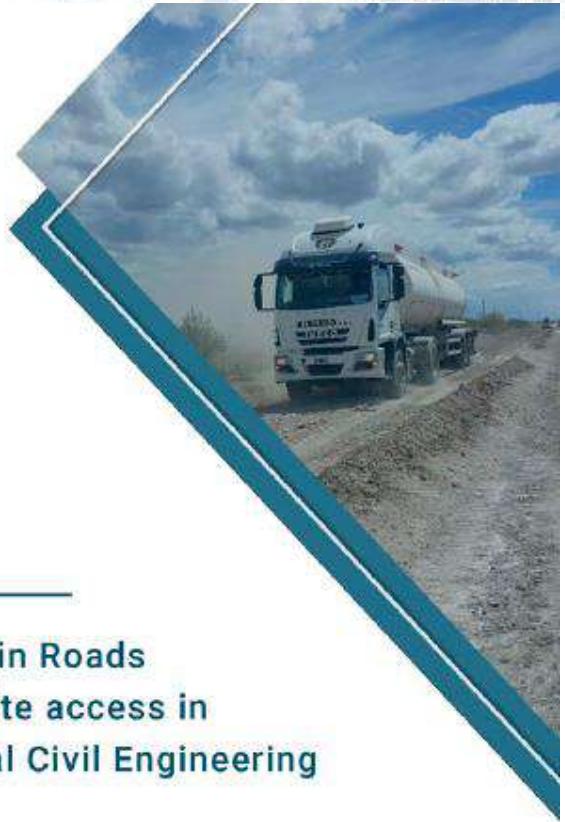


H  
Y  
G  
T  
  
C  
H  
E  
M  
I  
C  
A  
L

“ Quality In Every Solution ”



شركة سماء المميزة لمواد البناء  
**SKY SPECIALIZED**  
FOR BUILDING MATERIALS



## Roads Engineering

SS21 has been successfully used in Roads build-ups for Roads, highways, site access in Oil&Gas Sites, Mining and general Civil Engineering Works.

*This product is simply applied in the compaction water, mixed. As well, can be sprayed over the soil surface. Specifications depends on the use.*



H  
Y  
G  
T  
  
C  
H  
E  
M  
I  
C  
A  
L



# ROADS ENGINEERING

For Roads Engineers, the following properties of interest are improved:

## **CBR**

CBR (*California Bearing Ratio*) values are raised considerably. The improving depends on the soil condition and the amount of product used. Our technical group can give detailed information of our lab test results for different soil conditions and amount of product used.

## **UCS**

UCS (*Unconfined Compression Strength*) values usually in Sandy/Gravelly soils are null, as the soil has no self-standing condition to develop these tests (Frictional soils). Regarding this, the cohesion generated by the adhesion of SS21, allows the possibility to the samples to self stand and develop these tests, with high results as the curing process progress.

## **DUST**

Dust Control, is required in roads, as the dust highly reduces the visibility. With SS21, no dust is merging from the surface, as the product is highly effective for keeping the particles adhered. Dust in air measurements gives us low to null values in comparison with no treatment condition, and complying with the HSE requirements.

H  
Y  
G  
T  
  
C  
H  
E  
M  
I  
C  
A  
L



# ROADS ENGINEERING

For Roads Engineers, the following properties of interest are improved:

## PERMEABILITY

Permeability of soils can be reduced from high permeability to "Impermeable". The waterproof effect that SS21 does to the soil, generates an strong adherence and makes possible to let the water flow in the top of the sand. The results of this condition are tested, and proved with lab testing and sites applications. Temporary water channels has been done in sand with this product.

## EROSION

Erodibility of soils in roads is a huge problem. Using SS21, roads in Oil&Gas sites that has weekly maintainance, are now yearly maintained as general protocol, but they can allow more time between maintainance.

## WET-DRY CONDITIONS

Dry/Wet cycles and submerged condition of soils, is one of the main causes of deterioration of road build-ups. Our tests has shown that a small block of sand treated with SS21, can stand months under the water without any change. As well, samples for testing shown that after submerged condition, the values has not experience significantly changes, and comply with the same standards in soaked and unsoaked condition.

H  
Y  
G  
T  
  
C  
H  
E  
M  
I  
C  
A  
L





### **DUNES AND COASTAL EROSION & STABILITY**

Dunes erosion has been effectively treated with SS21. Dunes and roads in sand between the dunes, became stable after SS21 is applied. The erosion from water and wind is not longer a problem, and the dunes and sand roads are fully transitable for pedestrians and light vehicles with simple spray application.

Stable dunes are made with a simple mix of Sandy soil and SS21, safe and strong. The landscaping can be easily solved using SS21 for the adherence of particles of Coarse soils. SS21 is a durable and strong solution for old problems that are now still an issue around the world.

Coastal environments, usually with Coarse grained soils, can be easily treated with SS21, and the surface can be made as required, only mixing the soil with SS21, or applying as spray over the modelled surface. Coastal erosion in Sandy soils has been a problem until SS21 was developed.





### **SLOPES/RAVINES STABILITY & EROSION**

The lose of moisture in slopes and ravines is a big issue for the stability of them. As well, the surface water infiltrations can generate high loads and unstable conditions. SS21 has been proved effectively to keep sand stable and to impermeabilize surface, giving more certainty to the Stability calculations of slopes.

Slopes and ravines in sandy soils are usually experiencing sliding during their lifetime. The impermeability, cohesion and strength that SS21 gives to the soil, reduces the risk to the slides. Our technical team is specialist in developing solutions for these conditions.

Erosion in Slopes generates preferential channels for the water flowing from the surface. These channels turn then into highly unstable conditions that increase considerably the risk of failure of the slope, and are a usual cause of sliding. There is no need to expose a slope/ravine to that risk, usually risking human life, infraestructure and the economic growing of cities and population. SS21 in a correct engineering design is the solution for this.

H  
Y  
G  
T  
  
C  
H  
E  
M  
I  
C  
A  
L





## DUST

Dust in construction sites and roads is usually a problem for HSE and for road safety, as the dust can be inhaled by the people in site and surrounding populations, and the dust in the air generates bad visibility condition, main cause of accidents in some sites environments.

SS21 has been proved in Oil&Gas roads in deserted locations, and the reduction of Dust has been approved by the HSE managers of the site, considering it a good tool for avoiding risk for breathing and possible collisions due to the reduction of visibility.



H  
Y  
G  
T  
  
C  
H  
E  
M  
I  
C  
A  
L



# TUNNELING, DRILLING, WATERPROOFING AND INJECTION

## TUNNELING, DRILLING, WATERPROOFING AND INJECTION

SS21 is now being studied, modified and applied as required for highly complex engineering solutions. Our product is specially modified for each of this applications and to suit the project requirements, with addition of other of our products. These applications are experimental and are in continuous Research and Development with excellent results in real cases and in laboratory.

SS21 has been effectively applied to make "Temporary" casings while drilling in sand, with the adequate drilling techniques and tools, a good instrument for ground engineering and drilling companies.

Tunnel leaks has been controlled using SS21. Using SS21 as chemical grouting, high porosity loose soils has been turned into a more cohesive and strong column below foundations. Surrounding areas of pipes and manholes have been impermeabilized and sealed from groundwater. Open water channels in sand. All this applications are just a few of the new trends in SS21, a live chemical product for High quality solutions in Engineering

These special applications of our product, keeping us looking forward new improvements and solutions for challenges in Ground Engineering. Please do not hesitate in contact our Technical Team for more information about the possibilities of our product and to share some information about your projects.



“ Quality In Every Solution ”



شركة سماء المميزة لمواد البناء  
**SKY SPECIALIZED**  
FOR BUILDING MATERIALS

### APPLICATION PICTURES



**SAND STABILIZATION**



H  
Y  
G  
T  
  
C  
H  
E  
M  
I  
C  
A  
L

“ Quality In Every Solution ”



شركة سماء المميزة لمواد البناء  
**SKY SPECIALIZED**  
FOR BUILDING MATERIALS



**DUST CONTROL**



H  
Y  
G  
I  
E  
N  
I  
C  
A  
L



# SSBM CCC1000S

## Water Based Concrete/Stone Sealer & Water Repellent

### PRODUCT DESCRIPTION

SSBM CCC1000S is a water repellent product based on silicone resin solution ready to use to provide water repellent surface with improved self-cleaning properties on exterior building, brick work, concrete, cement rendering and natural stone, it will repel rain water and inhibits ingress of surface water with no hydrostatic pressure.

### FIELDS OF APPLICATION

SSBM CCC1000S can be used above and below grade to protect against moisture penetration by capillary action. It penetrates deep into the surface pores creating a water resistant barrier which remains affective against moisture for many years.

Substrates including concrete, brick work, cement rendering and natural stone.

### ADVANTAGES

- Effective on old and new surfaces, reduces unsightly staining.
- Can be applied by brush or roller, risk of efflorescence is reduced.
- Reduce causes of cracking and precast concrete.
- Preserves natural color and texture of created material and allow surface to breath.

### PROPERTIES

Standards	BS 6744-92 Class A & B
Product Appearance	Colourless Liquid
Composition	Formulated based on Silicone Resin water based and other additives.
Specific Gravity @ 25°C	0.80 – 0.90
pH Value	5-7
Compatibility	SSBM CCC1000S is compatible with brick work, concrete, cement rendering, stone.

**Note :** These results were obtained at laboratory conditions (23°C)

### PACKAGING

Product	Packaging
SSBM CCC1000S	1 Liter
SSBM CCC1000S	5 Liters
SSBM CCC1000S	20 Liters

Supplied in Plastic Container or Jerry Can

### APPLICATION DATA

**Surface Preparation:** Surface must be clean, dry, free from oil & grease, loose particles and algae growth. Structurally sound and free of efflorescence, mortar residue and other contaminants that would prevent the penetration of SSBM CCC1000S. Cracks, voids and other surface defects must be repaired prior to application.

SSBM CCC1000S can be applied by spraying or brushing. Ensure an even coat over the entire surface, porous surface should be well saturated with a two coats application.

### COVERAGE

**Coverage:** 4.5-9.0 M<sup>2</sup> per one liter based on number of coats.

The coverage rates are approximate and for estimation purpose only.

### STORAGE

**Storage:** Up to one year stored out of direct sunlight and extremes of temperature. The product shall be raised on pallets, and not stored directly on the ground surface.

Stir the Plastic Container or Jerry can before using.

### CLEANING

Use water to clean application equipment and tools, immediately following use.

S  
S  
B  
M  
  
C  
C  
C  
1  
0  
0  
0  
S

“ Quality In Every Solution ”



شركة سماء المميزة لمواد البناء  
**SKY SPECIALIZED**  
FOR BUILDING MATERIALS

### APPLICATION PICTURES



CCC1000S CONCRETE PROTECTION



S  
S  
B  
M  
  
C  
C  
C  
1  
0  
0  
0  
S

“ Quality In Every Solution ”



شركة سماء المميزة لمواد البناء  
**SKY SPECIALIZED**  
FOR BUILDING MATERIALS



S  
S  
B  
M  
  
C  
C  
C  
1  
0  
0  
0  
S



# labancadellacalce

**Banca della Calce offers materials and services to professionals in sustainable building and architectural restoration:**

certified aged lime putty, natural hydraulic lime, innovative products based on lime and hemp and the knowledge to use them to the best, from formulations to on-site consultancy.

La Banca della Calce specializes in **the use of lime for the realization of the highest quality products**; the company proposes itself as a reference point in the development and distribution of knowledge of technologies related to this material with very ancient origins but with a **“green” and sustainable future**.

Starting from the excellent results achieved over the years and the satisfaction of its customers, Banca della Calce aims to increase the number of construction companies that use **eco-friendly materials to improve livability**.

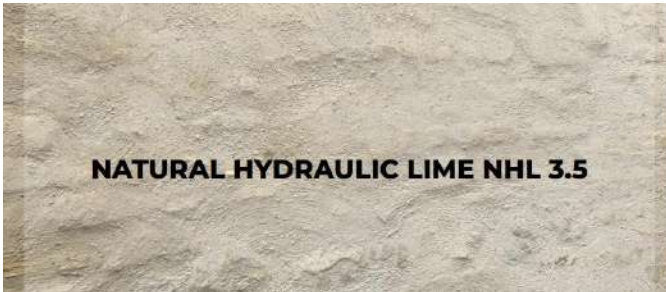


## TRADITIONS AND FUTURE BLEND IN HIGHER-QUALITY LIME

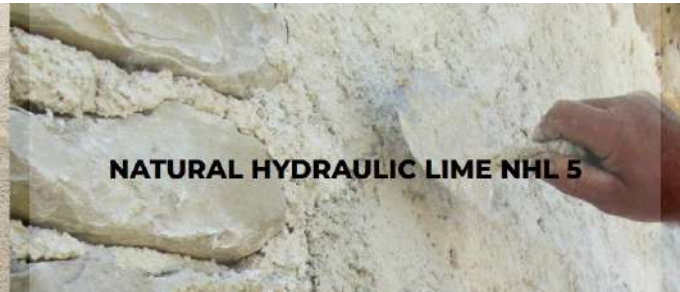
Over thousands of years, men have been building with lime, creating works that arrived to us beautiful and untouched. Today this noble material become again present: to preserve the past and to built the future we need lime.

But which lime? Lime is not all the same. **La Banca della Calce offers to the market of architectonic restoration and sustainable building only qualified lime.** A lime guaranteed by productions. Origin certifications unique in the world and detailed labelling. An *higher-quality lime*, it's our lime.

L  
A  
  
B  
A  
N  
C  
A  
  
D  
E  
L  
L  
A  
  
C  
A  
L  
C  
E



**NATURAL HYDRAULIC LIME NHL 3.5**



**NATURAL HYDRAULIC LIME NHL 5**

## NATURAL HYDRAULIC LIME

The hydraulic limes are obtained from marly limestones or calcareous marls (natural mixtures of limestone and clays) subjected to burning process at temperatures generally between 1100 and 1250° C. In such conditions calcium oxide is formed, which subsequently combines in part with the silica and the alumina of the clay, forming hydraulic silicates and calcium aluminates, that is compounds which, reacting chemically with water, form stable and insoluble hydrates. That allow the material to **harden and remain stable even under water (hydraulic behaviour)**. On leaving the kiln, the hydraulic lime is subjected to extinction, such as aerial lime, but, given the presence of hydraulic compounds, the extinguishing water is only the stoichiometrically necessary to transform the calcium oxide, left as quicklime, in calcium hydroxide. If, in fact, even the silicates and the aluminates are hydrated, they would not be able to provide hydraulic characteristics during use.

According to the EN 459-1:2010 standard, **natural hydraulic lime is available in three different types: NHL 2, NHL 3.5 and NHL 5.** The acronym NHL is, in fact, synonymous with Natural Hydraulic Lime. The numbers 2, 3.5 and 5 represent the compressive strength expressed in N/mm<sup>2</sup> and are associated with the traditional terms of 'weakly hydraulic lime', 'moderately hydraulic lime' and 'eminently hydraulic lime'. The merit of the NHL is that each grade is suitable for different types of use and boundary conditions. This means that it is possible to obtain different mortars, adapting them to the type of use, the required performances and the expected durability. **Banca della Calce has selected two types of NHL 3.5 and NHL 5 hydraulic lime produced in Italy in traditional, natural draft, coal-fired kilns.**

## WHAT LIME? WHAT INTERVENTION?

Contrary to what is thought, when choosing a natural hydraulic lime, not always a "stronger" lime is the best solution. The most important thing it's know what to do and choose the right lime.

In the case of historical walls, by way of example, the mechanical resistances are less important than the chemical-physical compatibility. **A NHL 3.5 natural hydraulic lime used in a plaster will give the coating characteristics of breathability and help regulate the relative humidity in indoor environments.** Moreover, thanks to the low elastic modulus, it will have the ability to absorb the natural settling of the masonry and the effects of thermal expansion, thus ensuring greater durability over time.

In other cases, of course, mechanical performance will be important. A mortar with a low mechanical strength, will be poorly suited to collect stones and bricks or to make a screed. In these cases, **NHL 5 will be the right choice and allows you to build, fix, cover, coat and repaint.** Finally, it is necessary to consider the environmental conditions and the degree of exposure to atmospheric agents. The mortar must have a hydraulicity index suitable for the quantity of water, or humidity, with which it will normally be in contact over time. Basically, in the preparation of a mortar it is not enough to choose the stronger or weaker lime, instead it is necessary to select the most suitable one.

**Banca della Calce can help you make this choice** and support you in the selection and mix design phase of the mortars formulated for your restoration or new construction site, always oriented by conservative principles and green building choices.

L  
A  
  
B  
A  
N  
C  
A  
  
D  
E  
L  
L  
A  
  
C  
A  
L  
C  
E



APPLICATION PICTURES



L  
A  
  
B  
A  
N  
C  
A  
  
D  
E  
L  
L  
A  
  
C  
A  
L  
C  
E

“ Quality In Every Solution ”



شركة سماء المميزة لمواد البناء  
**SKY SPECIALIZED**  
FOR BUILDING MATERIALS



L  
A  
B  
A  
N  
C  
A  
  
D  
E  
L  
L  
A  
  
C  
A  
L  
C  
E

“ Quality In Every Solution ”



شركة سماء المميزة لمواد البناء  
**SKY SPECIALIZED**  
FOR BUILDING MATERIALS



The company "**Dewmark**" - the leading European company operating in the market of expansion joints since 2007. Our engineers design and create expansion joint profiles for a wide variety of applications around the world.

The company is represented in more than 15 cities in 11 countries. For many years of activity, she has established herself as a reliable and proven partner.

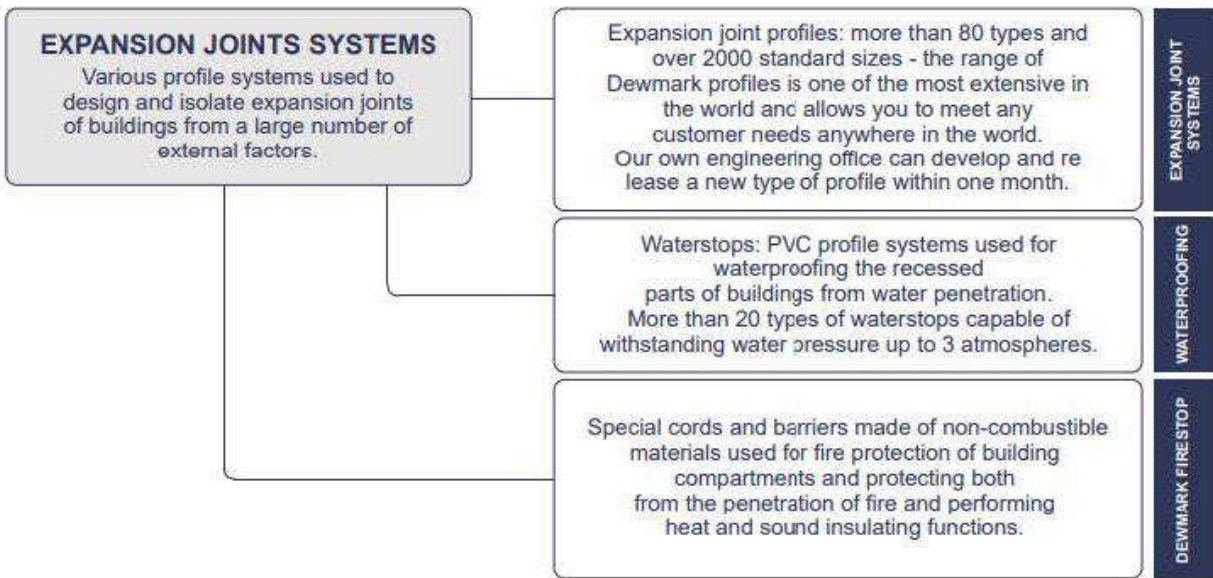
Every year we carry out projects for a wide variety of objects in the entire world. For 10 years of work in our portfolio more than 2,000 successfully implemented projects of various scale and complexity.

Our task is timely and high-quality production of profiles for expansion joints using the latest technologies and raw materials from leading companies in Russia and Europe, as well as providing services for their selection and design, considering the characteristics of each object. The expansion joint is an integral part of the construction industry, distributing stress and strain, ensures the stability and durability of the structure. Therefore, it is necessary to choose a reliable, responsible company, time-tested.

D  
E  
W  
M  
A  
R  
K

**EXPANSION JOINTS PROFILES**

Profile systems used for the construction of expansion joints in floors, walls, ceilings, facades and roofs of buildings. For all types of expansion joints from 5 to 1000 mm.



D  
E  
W  
M  
A  
R  
K

### FIRESTOP

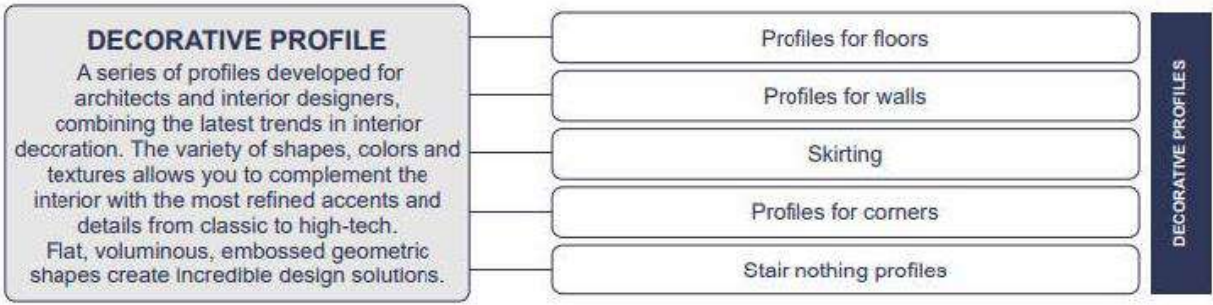


Fire barriers with fire resistance up to 4 hours (EI 240) protecting building compartments from the spread of fire through expansion and structural joints from 10 to 1000 mm.



Fireproof cord made of basalt fiber are used for construction gaps with a width of 5 to 150mm. The fire resistance EI 240 allows you to keep the flame up to 4 hours.

**DECORATIVE PROFILES**



D  
E  
W  
M  
A  
R  
K

“ Quality In Every Solution ”



شركة سماء المميزة لمواد البناء  
**SKY SPECIALIZED**  
FOR BUILDING MATERIALS



**PROFILES FOR WALLS**



**PROFILES FOR CORNERS**

D  
E  
W  
M  
A  
R  
K

# UNISTRUT®

A PART OF **atkore**  
INTERNATIONAL

## Products:

- Unistrut Channel & Metal Framing
- Unistrut Fixing
- Unistrut Kwikstrut
- Unistrut Cable Tray
- Unistrut Cable Ladder
- Unistrut Cable Basket
- Unistrut Pipes & Cable Clamps
- Unistrut Lighting Supports
- Unistrut Steel Trunking
- Complete range of supporting accessories in a wide variety of finishes includes PG, HG, SS, ZD designed to suit the environmental demands of the modern day market sector.



U  
N  
I  
S  
T  
R  
U  
T



“ Quality In Every Solution ”



شركة سماء المميزة لمواد البناء  
**SKY SPECIALIZED**  
FOR BUILDING MATERIALS



U  
N  
I  
S  
T  
R  
U  
T

“ Quality In Every Solution ”



شركة سماء المتخصصة لمواد البناء  
**SKY SPECIALIZED**  
FOR BUILDING MATERIALS



**Roadtechs** is one of the leading manufacturers, suppliers, and installers of Specialist Surface Treatment Solutions in the UK. Established in 1994, Roadtechs is one of the leading manufacturers, suppliers, and installers of Specialist Surface Treatment Solutions in the UK.

**Roadtechs** bring together innovation, quality, performance and experience with robust solutions and first-class engineering to offer comprehensive repair and maintenance options for road, rail, docks, runways, urban environments, and bridges. We are an open and flexible organisation that offers a complete transport infrastructure solution from manufacture, delivery and installation through to expert advice, guidance and consultation, which enables us to deliver a rapid and effective service to help keep transport networks safe, comfortable and operational.

**Roadtechs** delivers Specialist Surface Treatments using non-traditional materials and processes with the majority of operations on term contracts for highways and infrastructure maintenance. Our collaborative approach focuses on identifying a more permanent solution, underpinned by our ability to offer the client a wide choice of products and the way we deliver them. We are consultative, realistic, and honest about what our Specialist Surface Treatments can and cannot do and where they will bring most benefit.

➤ **Surface Extension Treatments**

Our Surface Extension Treatments (SET), Reclamite®, RHINOPHALT® and CRF Surface Sealant, offer penetrative, restorative and durable solutions to enable the lifecycle extension of existing 'good' roads.

[Read more](#)

➤ **Highways**

Roadtechs is one of the leading manufacturers, suppliers, and installers of Specialist Surface Treatment Systems in the UK. We offer comprehensive repair and maintenance solutions for road, rail, docks, airports, bridges, and other built environments.

[Read more](#)

➤ **Aviation**

Our products and services are suitable and proven to assist with repairing and maintaining Aviation Infrastructure with minimum disruption, to meet the exacting standards required.

[Read more](#)

➤ **Materials**

From our modern automated manufacturing facility in Norfolk we supply and deliver a wide range of road markings, high friction surfacings, crack & joint repair systems and decorative surfacings for all types of highways and pedestrian surfaces.

[Read more](#)

➤ **Plant & Equipment**

With extensive experience of operating in the highway maintenance sector ourselves, we understand the requirements of the vehicles and tools needed to deliver efficient and cost-effective highway maintenance and safety solutions.

[Read more](#)

➤ **Why Roadtechs?**

We bring together Innovation, quality, performance and experience with robust solutions and first-class engineering to offer comprehensive repair and maintenance options for road, rail, docks, runways, urban environments, and bridges.

[Read more](#)

R  
O  
A  
D  
T  
E  
C  
H  
S



### **JOINT, CRACK AND PATCH REPAIRS:**

- Roadflex F (Flexible) and H (High Modulus)
- Techscreed Fill and Overband
- Roadseal Overbanding
- Techcrete (Various Grades) – Highways England Approved
- Techjoint Pj300 – Asphaltic Bridge Joint.
- Techjoint Torpical

### **POTHOLE REPAIRS:**

- Roadpatch MMA
- Roadpatch

### **HIGH FRICTION / COLOURED SURFACING:**

- Techgrip RTT1
- Duragrip
- Duragrip PU
- Techgrip Colours

R  
O  
A  
D  
T  
E  
C  
H  
S



**Joint, Crack and Patch Repairs**

Effective solutions to treat all types of joint, crack and pothole issues, including BBA certified and HAPAS approved products.



**Pothole Repairs**

A unique range of pothole solutions which can be used to repair all types of potholes quickly, efficiently, and permanently.



**High Friction / Coloured Surfacing**

BBA certified and HAPAS approved Type 1, hot and cold applied high friction surfacing systems and other area marking solutions.



**Road Marking Materials**

A full range of BSI Kitemark licenced thermoplastic road marking materials along with innovative MMA and Chloroprene based road marking solutions.



**Specialist Surfacing**

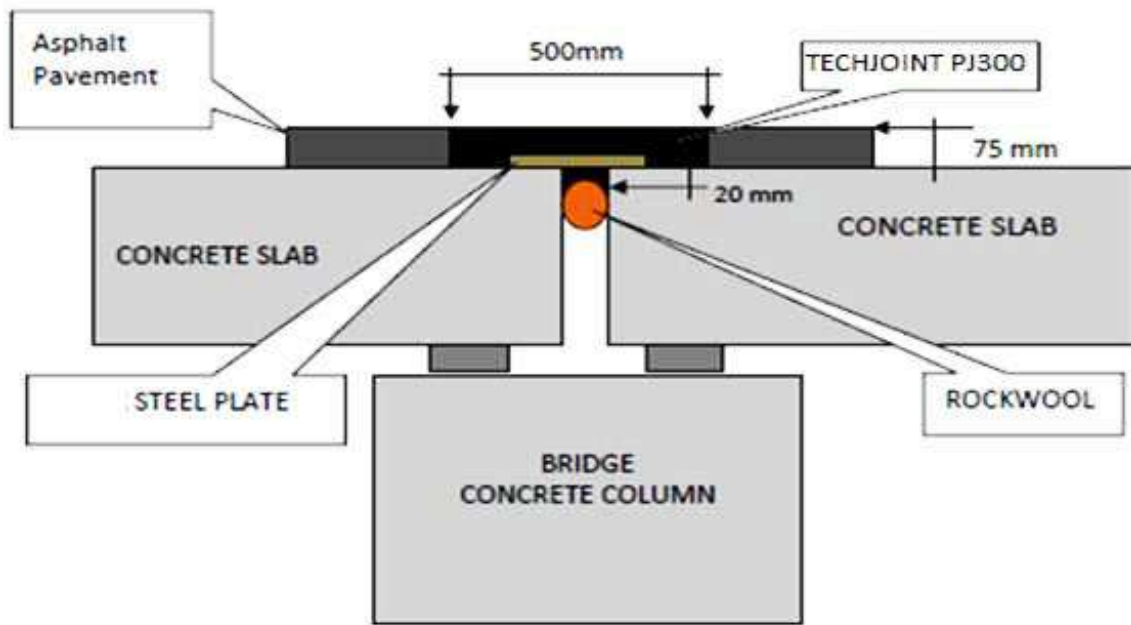
Unique surfacing products including textured overlay, ironwork reinstatement and resin bound systems.



**MMA Products**

Innovative Methyl Methacrylate (MMA) based products for a wide range of applications, including roadmarking, area marking and crack repairs.

### TECHJOINT PJ300 ASPHALTIC PLUG JOINT SYSTEM



“ Quality In Every Solution ”



شركة سماء المميزة لمواد البناء  
**SKY SPECIALIZED**  
FOR BUILDING MATERIALS

# Tensar®

**Tensar**, a division of CMC, provides innovative, project-specific solutions for common site development applications. As a world-leading manufacturer and provider of ground stabilization and soil reinforcement solutions, our proven geogrid technology has benefited thousands of civil construction and engineering projects around the world for nearly 50 years.

When compared to conventional site development solutions, **Tensar's** technology-based alternatives are faster to install, incorporate higher performance, remain reliable over time, and are more cost-effective. Together, these benefits create a greater total value through upfront and lifecycle cost savings, time savings and increased sustainability.

In 2022 **Tensar** became a division of CMC, which is headquartered in Irving, Texas, USA expanding our global presence significantly. **Tensar** also works alongside Geopier, a division of CMC to provide a wider range of solutions to customers.

To ensure easy availability of our high-performance solutions, **Tensar** has three manufacturing locations around the world:

Morrow, Georgia, United States, Blackburn, England, United Kingdom, Wuhan, China

These plants now join the CMC network of sites which includes everything from local recycling centers, steel mini-mills, and micro-mills to large-scale fabrication centers, engineering operations, heat-treating facilities, and other construction-related operations.

For more information on other CMC divisions and lines of business, visit [cmc.com](http://cmc.com)



**Tensar** geogrids are highly efficient, durable polymer grid products suitable for the stabilization or reinforcement of soil aggregates. They are also lightweight and easily handled. This product class is highly suitable for use as structural load-bearing elements in many demanding earthwork construction applications, like the stabilization of roadways, rail tracks, and other paved and unpaved areas subject to traffic loading.

T  
E  
N  
S  
A  
R

“ Quality In Every Solution ”



شركة سماء المميزة لمواد البناء  
**SKY SPECIALIZED**  
FOR BUILDING MATERIALS



**ASPHALT REINFORCEMENT (PAVED ROADS AND PAVED AREAS)**



**RETAINING WALLS**



**STEEP SLOPES**

T  
E  
N  
S  
A  
R

# “ Quality In Every Solution ”



شركة سماء المميزة لمواد البناء  
**SKY SPECIALIZED**  
FOR BUILDING MATERIALS



Erosion Control- Protecting slopes and waterways with Tensar Technology



TensarTech Geocell Mattress System provides an alternative approach for embankment construction.



Tensar geogrids can strengthen weak subgrades and can control differential settlement, creating a mechanically stabilised layer for runways and taxiways.



Tensar TriAx® geogrids Increase bearing capacity and improve safety & create safe areas of hard standing.



Geogrids that mechanically stabilise the track ballast layer to reduce deformation.



Time-saving technology for home builders

T  
E  
N  
S  
A  
R

“ Quality In Every Solution ”



شركة سماء المميزة لمواد البناء  
**SKY SPECIALIZED**  
FOR BUILDING MATERIALS



**Rexmar Engineering Ltd** manufacturers and suppliers of Road Marking Machines and Equipment.

**Rexmar Engineering** manufacture and supply a full range of Road Marking Machines and Equipment. We pride ourselves in a high standard of craftsmanship, coupled with a competitive price structure and a policy of working with customers to meet their own individual requirements.

**Rexmar Engineering** are always striving to produce ‘state of the art’ equipment with reliability and fuel efficiency of the upmost importance and taking into consideration a sustainable environment.

Our range of equipment extends from Truck Mounted and Self-Propelled Thermoplastic Application Machines through to Feeder Trucks, Screed Trucks and Anti-Skid Trucks (vehicles used for the application of surface friction materials).

**Screed Trucks**

**Feeder Trucks**

**Road Marking Machines**

**Anti Skid Truck**

**Road Marking Trailer**

**Pre-Heaters**



R  
E  
X  
M  
A  
R





**10 Tonne Screed Truck**

Complete with Twin 2 x 40 Gallon Diesel Oil Fired Pre-Heaters



**12 Tonne Screed Truck**

Complete with Twin 2 x 60 Gallon Diesel Oil Fired Pre-Heaters and a Surface Mounted Compressor



**14 Tonne 5000 Extrusion Machine**

Complete with a Thermoplastic Holding Tank and a Compressor



**14 Tonne 5000 Spray and Extrusion Machine**

Complete with a Thermoplastic Holding Tank and a Compressor

R  
E  
X  
M  
A  
R

“ Quality In Every Solution ”



شركة سماء المميزة لمواد البناء  
**SKY SPECIALIZED**  
FOR BUILDING MATERIALS



**TG3500 Road Marking Trailer - Complete with Twin 2 x 40 Gallon Gas Fired Pre-Heaters.**



**Twin 2 x 100 Gallon Gas Fired Pre-Heaters**



**Single 1 x 40 Gallon Gas Fired Pre-Heater**



**Triple 3 x 30 Gallon Diesel Oil Fired Pre-Heaters - Shown as Truck Mounted**

R  
E  
X  
M  
A  
R

“ Quality In Every Solution ”



شركة سماء المميزة لمواد البناء  
**SKY SPECIALIZED**  
FOR BUILDING MATERIALS



**RM1100 Self Propelled Thermoplastic Spray/Extrusion Road Marking Machine**



**Pedestrian Operated Thermoplastic Screed Line Laying Machine**

R  
E  
X  
M  
A  
R

“ Quality In Every Solution ”



شركة سماء المميزة لمواد البناء  
**SKY SPECIALIZED**  
FOR BUILDING MATERIALS



TG3500 Road Marking Trailer - Complete with Twin 2 x 40 Gallon Gas Fired Pre-Heaters.



TG3500 Road Marking Trailer - Complete with Twin 2 x 40 Gallon Gas Fired Pre-Heaters.

R  
E  
X  
M  
A  
R

“ Quality In Every Solution ”



شركة سماء المميزة لمواد البناء  
**SKY SPECIALIZED**  
FOR BUILDING MATERIALS



R  
E  
X  
M  
A  
R



**Highway Resource Solutions (HRS) Ltd.** of United Kingdom created the market for incursion warning systems in the UK which are now recognized as industry best practice. The main aim is to provide an instant warning to roadworkers when all other control measures fail. A secondary aim is to remove personnel from areas of potential confrontation which reduces risk as well as cost and carbon emissions. HRS Ltd. Incursion Prevention & Warning system comprises of four key elements which are complementary and designed to suit most traffic management scenarios.

IIPAWS is a highly sophisticated, digitally-enabled device that sits on top of road cones, creating a digital layer of protection around a work zone to keep it safe. It is ready at all times to warn the work force of an incursion and can also sound an alarm.

IIPAWS can be placed anywhere around, in or near a work zone, including at access points, closure points and checkpoints.

### Key benefits:

- Increase employee safety**
- Prevention of work zone incursions**
- Improved customer and road user safety**
- Employees protected from confrontation**
- Improved operational efficiency**



“ Quality In Every Solution ”



شركة سماء المميزة لمواد البناء  
**SKY SPECIALIZED**  
FOR BUILDING MATERIALS



H  
R  
S  
  
L  
T  
D  
.

“ Quality In Every Solution ”



شركة سماء المميزة لمواد البناء  
**SKY SPECIALIZED**  
FOR BUILDING MATERIALS



H  
R  
S  
  
L  
T  
D  
.



“ Quality In Every Solution ”



شركة سماء المميزة لمواد البناء  
**SKY SPECIALIZED**  
FOR BUILDING MATERIALS

OMNIA QUAE SUNT  
LUMINA SUNT

**380-750**



**ARCHITECTS OF LIGHT**

380-750nm is the visible light spectrum.  
Everything is light. This is our essence.

Everything we do is customized and unique.  
380-750nm is a lab where we experiment the  
light; playing with the process and progress.

We are architects of *light*.

We design and build spaces and atmospheres  
through and with light. We feel the spaces and  
from there we develop our creative process.  
The processes are a key element for us, and  
they are a part of the final result.  
Designing and building as a whole.

For us creativity is the result of work,  
experimentation, discipline, experience. It's a  
result of curiosity, doubts, trials and errors,  
all together.

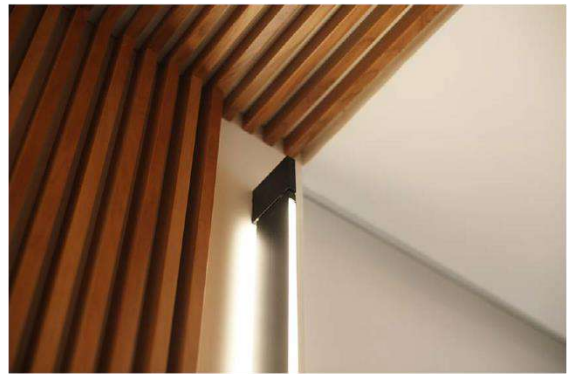
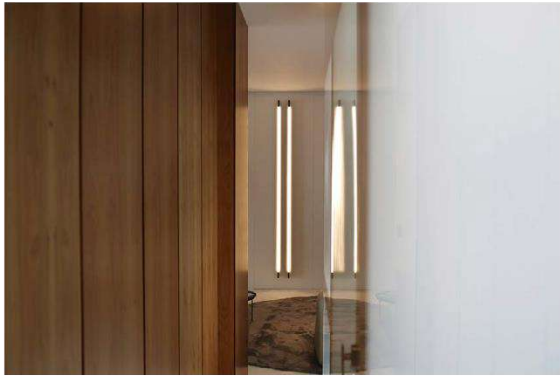
We are a multi-disciplinary team that works  
light in a creative field, obtaining results that  
stand out for their quality and innovation.

3  
8  
0  
-  
7  
5  
0

“ Quality In Every Solution ”



شركة سماء المميزة لمواد البناء  
**SKY SPECIALIZED**  
FOR BUILDING MATERIALS



3  
8  
0  
-  
7  
5  
0

EVERYTHING IS LIGHT

www.sky-specialized.com

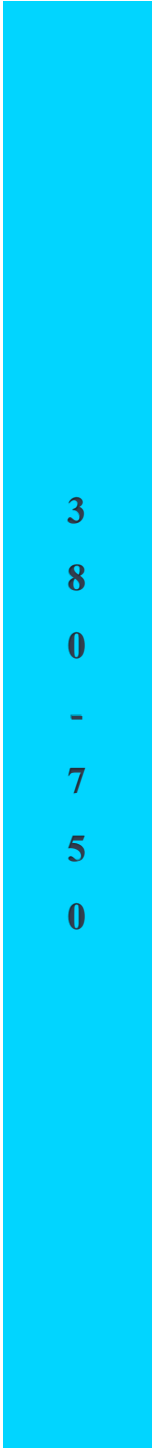
“ Quality In Every Solution ”



شركة سماء المميزة لمواد البناء  
**SKY SPECIALIZED**  
FOR BUILDING MATERIALS



From Space (Sant)



3  
8  
0  
-  
7  
5  
0

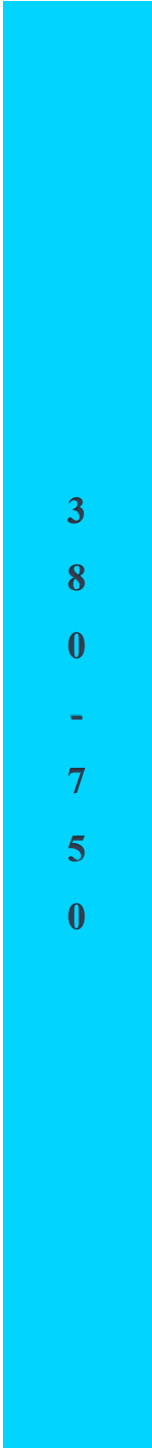
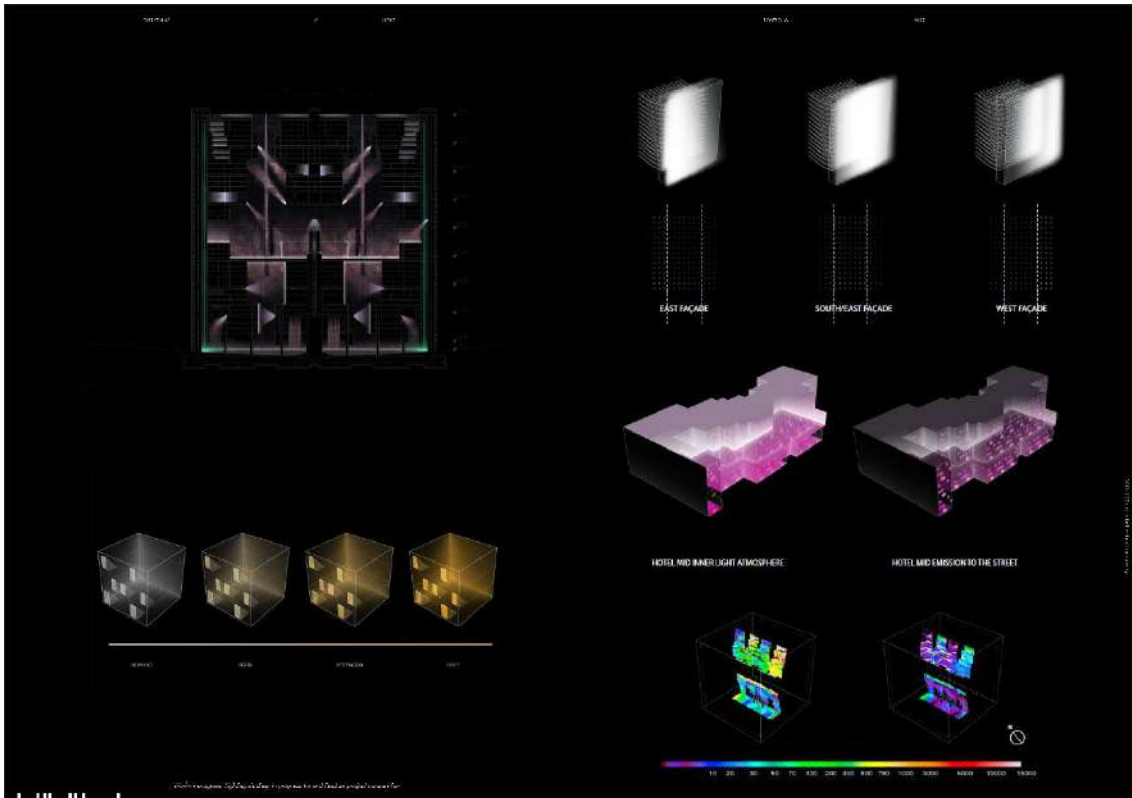
“ Quality In Every Solution ”



شركة سماء المميزة لمواد البناء  
**SKY SPECIALIZED**  
 FOR BUILDING MATERIALS



Concepts Foundation  
 Concept for the building, from open  
 atmosphere to the street



“ Quality In Every Solution ”



شركة سماء المميزة لمواد البناء  
**SKY SPECIALIZED**  
FOR BUILDING MATERIALS

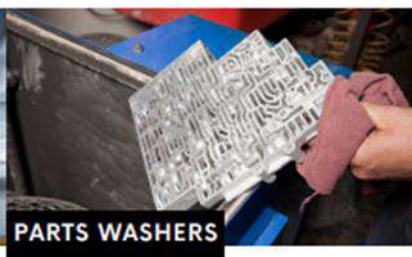


At **Aerogreen Solutions LLC** our vision, values, mission and operating principles have been fine-tuned over the past 30 years to guide us in the manufacturing of **AEROGREEN®**, a full line of environmentally preferred specialty cleaners. We're a dynamic company with a strong sense of who we are, and an unyielding commitment to putting our customers, and the environment, first. As the manufacturer of **AEROGREEN®** Specialty Cleaners, we have established the complete integration of environmental, health, safety, and security (EHS&S) management practices throughout our operations to insure we offer nothing but the highest quality products. Our professional, well trained sales, manufacturing and customer service departments are committed to understanding your cleaning requirements providing you with the specific products that best suit your needs. The **Aerogreen Solutions** team believes it's everyone's responsibility to help transform the environment into a cleaner, healthier place to live by going green whenever possible. **Aerogreen Solutions** innovative, eco-friendly cleaning products will help your company 'go green'.

## Industrial Cleaning Solutions



AVIATION



PARTS WASHERS



PAINT PREP



CLEANERS & DEGREASERS



INK & COATING REMOVER



RUST REMOVAL & METAL PREP

A  
E  
R  
O  
G  
R  
E  
E  
N

## AEROGREEN 4035 - RUNWAY RUBBER REMOVER



100% biodegradable, eco-friendly cleaning solution that emulsifies rubber from the runway surface dissolving the rubber residue into the solution. When combined with heavy duty sweeper / broom scrubbing action or hydro agitation, AEROGREEN 4035 thoroughly removes runway rubber residue, making the touch down zone safe for landing aircraft. It is a residue-free, non-hazardous, non-flammable, non-combustible solution that contains no caustic ingredients, leaving no harm to metals, runway pavement seals and caulking compounds, runway lights, landing aircraft or airport personnel.

### REVITALIZING THE RUNWAY:



BEFORE



DURING CLEANING



AFTER

## AEROGREEN 4025 - MOLD, MILDEW, & ALGAE CLEANER



Eco-friendly cleaner that quickly and safely removes mold, mildew and algae from airfield surfaces and surrounding buildings. AEROGREEN 4025 makes your airfields clean and safe again by improving the visibility of airfield markings. This water based, non-hazardous cleaner can be used with both cold and heated high pressure washers to quickly and safely remove a variety of residues from airport terminals, tarmacs, hangars, parking lots and ground support equipment.

- Certified by Boeing, McDonnell Douglas, EPA, & AST specifications
- Safe on equipment, stormwater systems, oil/water separators
- Easy application & No Harmful Toxins or Solvents



Mildew is equally or even more slippery than rubber under rainy conditions by reducing the surface friction. Stay steps ahead with a proactive approach—harness the power of Aerogreen 4025 to cleanse and safeguard your runway surfaces and markings from algae's impact.

## AEROGREEN 4015 - AIRCRAFT EXTERIOR CLEANER



Ready To Use Aircraft Exterior Cleaner is an eco-friendly, water-based cleaner that safely and efficiently cleans your aircraft, making them easier to maintain and safer to operate. This non-flammable, readily biodegradable cleaner can be directly used without dilution, rinses free with water, and leaves no residue or film. AEROGREEN® 4015 quickly removes carbonaceous soils associated with jet engine and helicopter operations, as well as caked on dirt and grime. AEROGREEN® 4015's state-of-the-art technology makes it the safest and the most effective aircraft cleaner on the market today.

- Certified by Boeing, McDonnell Douglas, EPA, & AST specifications
- No VOC's, safe on all types of surfaces
- Easy application & No Harmful Toxins or Solvents



Offering a comprehensive solution, our biodegradable cleaner tackles light to heavy soils, eliminating the need for multiple products and reducing hazardous waste disposal costs while ensuring environmental safety.

## AEROGREEN 4130 - INDUSTRIAL CLEANER & DEGREASER



Cleaner & Degreaser is formulated for pressure washing applications in industrial, commercial, and for both interior and exterior environments. Quickly and easily removes built-up dirt, oils, greases, fuel residue, mold, mildew, fungus, algae along with other contaminants from the surface. The use of the cleaner will prevent the return of mold and mildew. Using Aerogreen 4130 will significantly reduce surface contamination and increase efficiency over just plain water washing.

### USE CASES:



### USE IT ON THE FOLLOWING SURFACES:



stucco

steel

porcelain

stone

brick

plastic

aluminum

wood

“ Quality In Every Solution ”



شركة سماء المميزة لمواد البناء  
**SKY SPECIALIZED**  
FOR BUILDING MATERIALS



Western Material & Design and Cornerstone Construction Material have combined efforts to provide innovative, high quality cement, epoxy and polymer products for the heavy construction industry.

With more than 30 years' experience in developing and manufacturing cutting edge products, **FasTrac** Construction Products are known for performance and consistency. When combined with our commitment to excellent customer service you have a winning combination that brings value to the construction industry.

**FasTrac** products include rapid strength cements and concrete, repair mortars, high performance grouts, a full range of epoxies, mixing systems and our latest innovation – Hybrid Polymer Concrete.



F  
A  
S  
T  
R  
A  
C



# “ Quality In Every Solution ”



شركة سماء المميزة لمواد البناء  
**SKY SPECIALIZED**  
 FOR BUILDING MATERIALS

- Opened for traffic in less than 3 hours
- Very low shrinkage
- No priming or curing necessary
- Clean with water immediately after use
- Low permeability and improved durability
- Excellent resistance to freeze/thaw
- Excellent workability
- Made in the USA

FasTrac ReSurfacer is a two-component, rapid setting, low shrinkage mortar that is used to overlay existing pavements and floors. FasTrac ReSurfacer is mixed with polymer and water on site, and is placed with suitable placement equipment and finished to the desired texture. For applications thicker than 1-inch, the mortar should be extended with 3/8-inch aggregate.



## FASTRAC RESURFACER



FOR PARKING GARAGE APPLICATIONS



F  
A  
S  
T  
R  
A  
C

“ Quality In Every Solution ”



شركة سماء المميزة لمواد البناء  
**SKY SPECIALIZED**  
FOR BUILDING MATERIALS



## Fire Retardant Varnishes/Primer, Intumescent Paints, Coatings for Asbestos Reclamation



**STARTEM® SRL**, founded in 1999, is a chemical company specializing in the production of fire-retardant impregnating agents and fire-retardant varnishes, intumescent paints, products for the reclamation of asbestos cement roofing and adhesives for industrial applications

### 2) FIRE RETARDANT VARNISHES - PRIMER

Products certified in fire reaction class 1 in accordance with the UNI 9796 and products certified in euroclass B-s2, d0 in accordance with EN 13501-1: 2009. Are used to treat secondary elements such as wood and parquet floors, wooden furniture, wooden or MDF panels and panels for exhibition stands.

S  
T  
A  
R  
K  
E  
M

## 2) INTUMESCENT PAINTS

Paints tested and certified, according to the Italian and European regulation, to ensure the fire resistance of painted artifacts.

They are used for the treatment of steel, wooden and reinforced cement structures such as beams, pillars, pre-fabricated, ceilings and brick walls.

## 3) COATINGS FOR ASBESTOS RECLAMATION

Specific coatings certified for the encapsulation, the confinement and the removal of asbestos artifacts. **STARKEM® Srl** is a company with a quality management system certified UNI EN ISO 9001/2008.



### fireblock® PK

Two-component transparent polyurethane fire retardant varnish certified in Euroclass Bfl-s1.



### fireblock® TR

Two-component transparent polyurethane fire retardant varnish certified in Euroclass C-s2, d0.



### ciclo fireblock® EU

Transparent fire retardant painting cycle certified in Euroclass B-s1, d0.



### fireblock® 1001/EU

One-component white water based fire retardant paint certified in Euroclass B-s1, d0.



### starwood a.f.1

Transparent water based fire retardant impregnating agent certified in Euroclass C-s1, d0.

“ Quality In Every Solution ”



شركة سماء المميزة لمواد البناء  
**SKY SPECIALIZED**  
FOR BUILDING MATERIALS



**fireblock<sup>®</sup> 2010**

Water based intumescent paint.



**fireblock<sup>®</sup> 2018**

Water based intumescent paint.



**fireblock<sup>®</sup> 2024**

Water based intumescent paint.



**fireblock<sup>®</sup> 2010/c**

Water based intumescent paint.



**fireblock<sup>®</sup> 2024/c**

Water based intumescent paint.



**ciclo fireblock<sup>®</sup> EU**

Intumescent painting cycle.

## APPLICATION PICTURES



S  
T  
A  
R  
K  
E  
M

“ Quality In Every Solution ”



شركة سماء المميزة لمواد البناء  
**SKY SPECIALIZED**  
FOR BUILDING MATERIALS



S  
T  
A  
R  
K  
E  
M

“ Quality In Every Solution ”



شركة سماء المميزة لمواد البناء  
**SKY SPECIALIZED**  
FOR BUILDING MATERIALS

**TCE**

SUSTAINABLE ENGINEERED SOLUTIONS.



T  
C  
E

**TCE is a leading provider of deconstruction, environmental engineering civil, infrastructure and contracting services. Our team of dedicated professionals allows us to offer the best and most value for money sustainable engineered solutions to our clients.**

TCE has in-house technical ability, resources and know-how to provide complete planning, and delivery solutions through all stages of a project life-cycle.

“ Quality In Every Solution ”



شركة سماء المميزة لمواد البناء  
**SKY SPECIALIZED**  
FOR BUILDING MATERIALS

OUR CAPABILITIES

## REMEDIATION

TCE is a market leading environmental engineering specialist, with a proven industry track record of successfully delivering complex sensitive contaminated land remediation projects nationally.

“TCE bring a unique and fresh approach to problem solving and environmentally sustainable engineered project execution.”

FAHMI REZA  
REMEDIATION OPERATIONS MANAGER

T  
C  
E

# “ Quality In Every Solution ”



شركة سماء المميزة لمواد البناء  
**SKY SPECIALIZED**  
FOR BUILDING MATERIALS

TCE is at the cutting edge of market practices for early works packages to remediate and rehabilitate brownfield sites ready for its new potential use.

TCE employ the latest remediation technologies and have the experience, knowledge and capability to deliver optimal approach solutions and desired outcomes for specific site challenges.

TCE are committed to waste reduction, sustainability and making our communities and environments safer and cleaner for the future. TCE demonstrates this steadfast commitment by detailed material handling, waste segregation and treatment, maximisation of on-site and offsite material re-use and recycling and minimisation of waste material leaving site to landfill.

At TCE, our dedicated inhouse water team excels in the execution of contaminated groundwater projects, technical advisory services, and the design, commission and operation of temporary groundwater treatment solutions including “pump and treat” type system.

Our expertise spans the full spectrum of services, including:

### Design & Supply:

Tailored groundwater treatment solutions for contaminated water treatment to meet site specific stringent discharge criteria.

### Rentals:

Providing flexible options for temporary solutions.

### Mobile Water Treatment Plant:

Modular solutions for groundwater treatment including PFAS treatment.



T  
C  
E



# “ Quality In Every Solution ”



شركة سماء المميزة لمواد البناء  
**SKY SPECIALIZED**  
FOR BUILDING MATERIALS

TCE offers a full range of civil infrastructure services. At TCE we pride ourselves on having in-house professionals and industry knowledge to successfully deliver all manner of civil and infrastructure projects.

TCE have worked with our partners in Government, Services Authorities, Transport for NSW, Rail, Oil and Gas, Air and Seaports, National and International

Market Industry Leaders to successfully deliver major airport pavements, marine and coastal constructions, rail works, carparks, road upgrades, water and sewer networks, services reticulations and relocations, basement construction, reinforced concrete structures, steel structures, heavy industrial pavements, petroleum infrastructure, and highly trafficked roadways.



“In addition to providing comprehensive solutions and successfully delivering projects, here at TCE we pride ourselves on professionalism and open communication with our clients.”

WILL STAFFORD,  
CIVIL AND INFRASTRUCTURE OPERATIONS MANAGER

T  
C  
E



**Co-mender Inc.** Canada is an online platform and app solution that using the AR technology (augmented reality), it allows contractors and structures owners to get professional solutions to their concrete structures problems by linking its international experts to its local partner contracting team providing full professional Investigate – Design – Build services.

**Co-mender** also provides the needed inspection expertise along with the needed NDT testing equipment’s locally in any operating country at very reasonable man hours rates and only on demand reducing the cost of operating a full team with their full equipment.

All these activities are completed using a simple and user-friendly module Co-mendAIR developed and integrated in the platform by engineers to engineers based on extensive experience and full understanding of requirements and processes.

## Products:

- ✓ **Condition Assessment**
- ✓ **Non-Destructive Testing**
- ✓ **Durability Analysis**
- ✓ **Concrete Repair**
- ✓ **Structural Analysis/ Strengthening**
- ✓ **Blast Resistance**
- ✓ **Cathodic Protection**
- ✓ **Srstructural Watyerproofing**



**Fig 01: Co-mendAir AR Technology**



Fig 02 : Co-mendAir 360 Technology

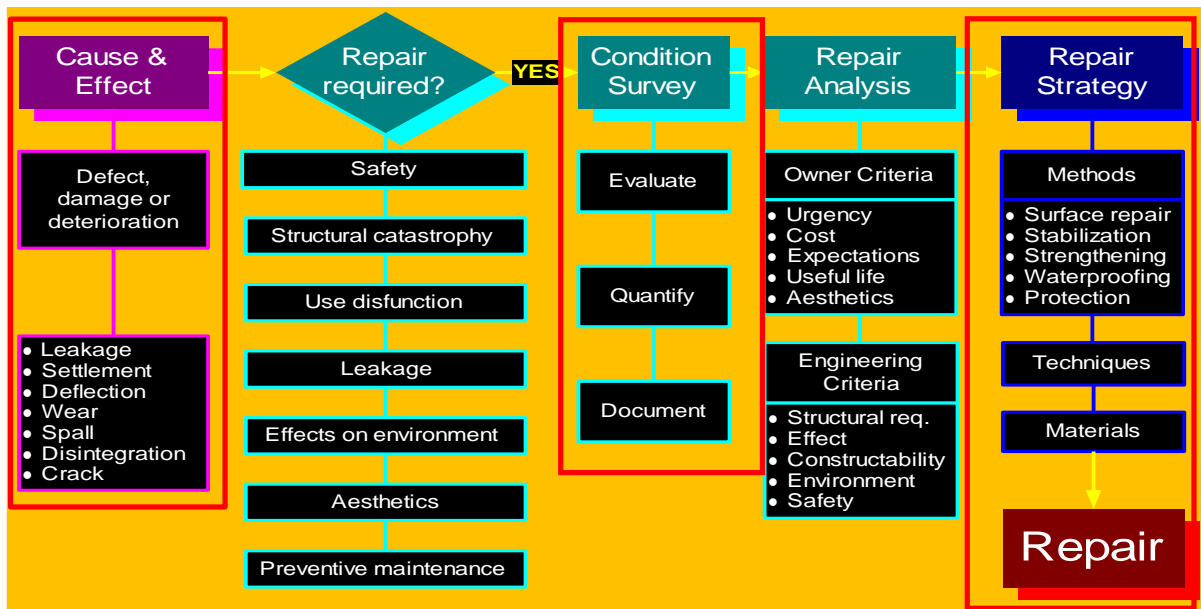


Fig 03: Our Condition assessment and Repair Process



Fig 04: Our Co-mendAir 360 Technology – Digital Twin



Fig 05 : Co-mendAir UAV 300 Drone

Our remote inspection with ComendAIR AR and MTK drones is of great value to inspect and detect automatically the defects and our sensing-based analysis is an important technique to test in very short time the whole bridge and provide real health data that matches the actual condition.

# DOLENCO

Tunnel Systems

### Advantages:

Once Installed, the Doleno Tunnel Drain System does not have a limited lifespan

Suitable for both new and existing structures

Can be used without or combined with spray membrane

The slim and monolithic design can be installed with very little space available

Quick and safe repair of concrete after physical amage, requiring minimal downtime of tunnel



D  
O  
L  
E  
N  
C  
O

“ Quality In Every Solution ”



شركة سماء المميزة لمواد البناء  
**SKY SPECIALIZED**  
FOR BUILDING MATERIALS



D  
O  
L  
E  
N  
C  
O



**ADCOS NV** (Advanced Construction Systems) is a Belgium based, independent system house for specialty chemicals, developed for use in construction, civil engineering, oil & gas, mining and other industries. ADCOS specialize in R&D and manufacturing of leak sealing and geotechnical injection resins, high performance coatings, waterproofing and concrete repair.

- **LEAK SEALING INJECTION**
- **GEOTECHNICAL INJECTION**
- **WATERPROOFING**
- **STRUCTURAL REPAIR**

### APPLICATION PICTURES



A  
D  
C  
O  
S



For more than 30 years now **PPW-POLYPLAN-WERKZEUGE GmbH** has been known world-wide both for its activities in the field of concrete crack grouting and as suppliers of tools and equipment for the processing of liquid synthetic materials.

The special **PPW-POLYPLAN-WERKZEUGE GmbH** catalogue (injection program) offers a comprehensive range of injection equipment for the grouting and sealing of cracks in concrete and masonry. Our production facilities located in Germany ensure quick delivery including tailor-made solutions to customer specifications.

## Products:

- **Injection Pump R1001**
- **Injectio Packers & Nipples**
- **Dust Masks**
- **Trowels**
- **Rollers**
- **Spiked Shoes**
- **Knee Pads**
- **Crack Magnifier**





“ Quality In Every Solution ”



شركة سماء المميزة لمواد البناء  
**SKY SPECIALIZED**  
FOR BUILDING MATERIALS



INJECTION PUMP R1001



INJECTION PACKERS

P  
P  
W