

A worldwide platform and system-house for construction chemicals with a strong focus on injection resins and geotechnical solutions

GENERAL INFO

CHEMICAL INJECTION RESINS

GEOTECHNICAL INJECTION RESINS

MISCELLANEOUS

CHEMICALS FOR TUNNELLING
AND CIVIL ENGINEERING

GENERAL INFO

ACOCHEM BV is an independent system house specializing in advanced construction chemicals for waterproofing, geotechnical solutions, concrete repair and high-performance coatings. Our expertise spans research and development, manufacturing, sales, marketing, application techniques, and consulting. Headquartered in Belgium, we operate globally through a network of construction chemical experts and production platforms.

WHY ACOCHEM?

ACOCHEM firmly believes that successful business thrives on the principle "Your succes is our priority". Proximity to our stakeholders, sustainability and customer service are some of our core values. Partnering with us means more than just placing orders and receiving products. Beyond our product expertise, we actively collaborate with our long-term partners, drawing on our extensive international experience in the construction chemicals industry to offer tailored solutions.

COMPANY VALUES:

Loyalty: We foster long-term partnerships rooted in trust and dedication, ensuring consistent support and mutual growth.



Proximity: By being close to our clients and suppliers, we deliver quickly and adapt seamlessly to evolving needs, enhancing project efficiency.



Sustainability: Our commitment to sustainability spans responsible sourcing of raw materials, durable high-quality products, and relationships that benefit both industry and community.



Efficiency: We streamline operations and communication, enabling us to meet project timelines and maintain cost-effectiveness.

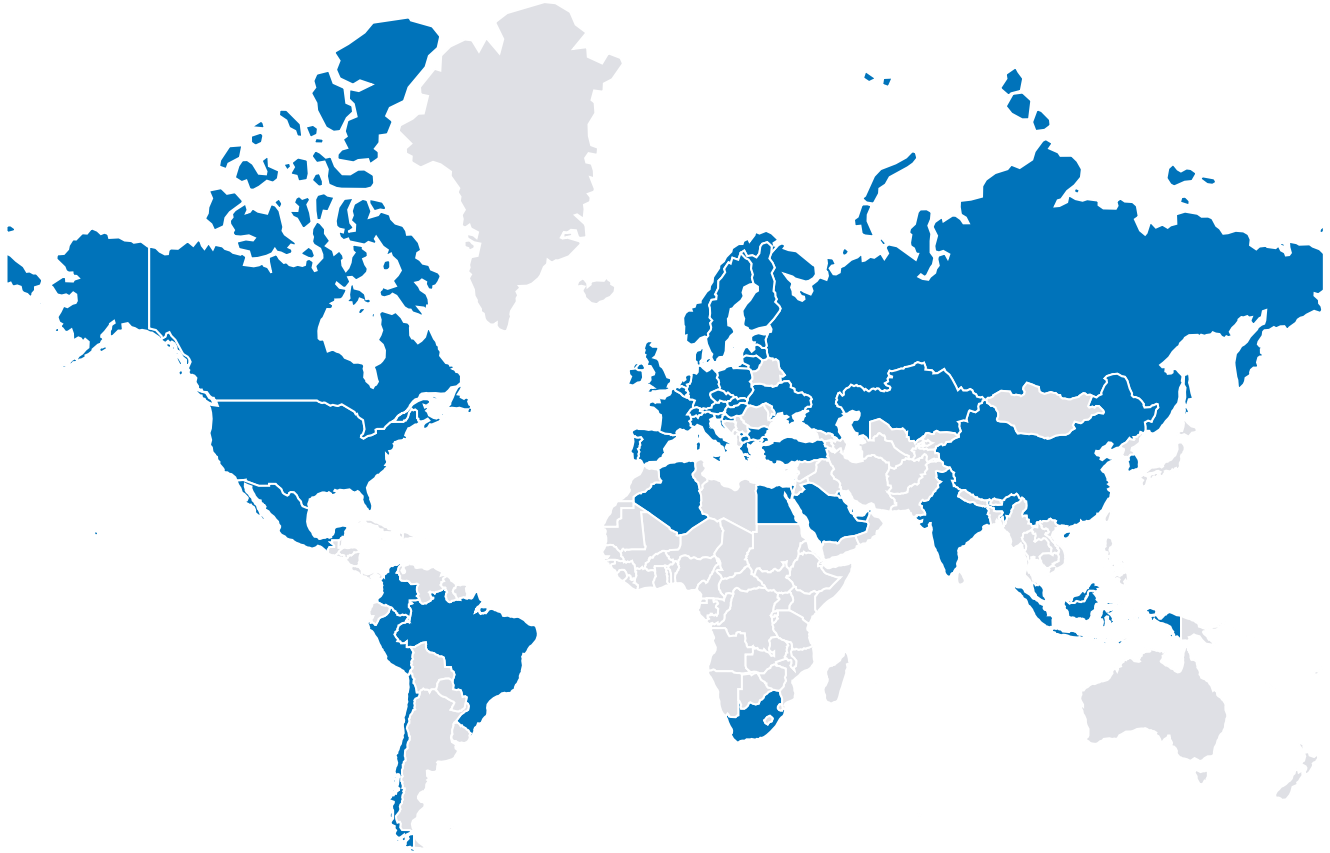


Customer Service: We provide personalized support, short communication lines, and flexible solutions, responding quickly to meet unique client needs on a global scale.



GENERAL INFO

ACOCHEM is a leading system house and manufacturer of construction chemicals with a strong global presence. Through its extensive network of international distributors, applicators and private labels the company ensures its innovative products reach markets worldwide. Known for its reliable and high-quality solutions, ACOCHEM has built strong, long-term relationships with clients across various industries. This wide-reaching network, combined with exceptional client support, positions ACOCHEM as a trusted partner in the sector of construction chemicals, offering tailored solutions that meet the ever-evolving needs of projects on a global scale.



SOLUTIONS:

Chemical Injection Resins | PU-based, Acrylic based, Urea-silicate based



Geotechnical Injection Resins | Polyurethane based georesins



Miscellaneous | Swell joints, High performance coatings, Waterproofing



PRODUCT RANGE

CHEMICAL INJECTION RESINS

POLYURETHANE BASED

One component hydrophobic system injected with a one component pump

PURINJECT 1C 115 ECO

One component, solvent free, ecological polyurethane injection foam, ideally suitable for water cut-off in concrete, masonry structures, rock and sandy soils. Reaction with water yields a semi flexible polyurethane closed cell foam. Injected with a one-component pump. Use with 6 to 10% catalyst.

PURINJECT 1C FLEX

One component, solvent free, polyurethane injection foam, ideally suitable for water cut-off in wet dynamic cracks and joints. Reaction with water yields a very flexible polyurethane foam. Injected with a one-component pump. Use with 6 to 10% catalyst. Soft flexible foam with closed cells.



PURINJECT 1C 55LV

One component, solvent free, very low viscosity polyurethane injection foam, ideally suitable for water cut-off in concrete, masonry structures, rock and sandy soils. Reaction with water yields a semi flexible polyurethane foam. Injected with a one-component pump. Use with 6 to 10% catalyst.

PURINJECT 1C SOIL

Solvent free very low viscosity polyurethane injection resin for soil stabilization. Harmless for the environment and resistant to biological influence.



One component hydrophilic system injected with a one or two component pump

PURINJECT 1C HYDROFOAM

Hydrophilic and solvent free low viscosity, closed cell polyurethane injection resin ideally suitable for expansion joints and tunnelsegment joints. Used as a 1 or 2 component system mixed with water.

PURINJECT 1C HYDROGEL

Hydrophilic one-component, solvent-free, polyurethane injection system. Produces a flexible foam or an elastomeric gel, depending on dilution. Injection using a two-component pump with water as second component.



PRODUCT RANGE

CHEMICAL INJECTION RESINS

POLYURETHANE BASED

Two component hydrophobic system injected with a two component pump

PURINJECT 2C W

A fast-reacting two-component polyurethane injection resin, FCH and halogen free. For sealing and hardening in water-carrying zones, particularly against pressurized water.

PURINJECT 2C D

A fast-reacting two-component polyurethane injection resin, FCH and halogen free. Hardening of strongly disaggregated, dry or lightly moist mountainous zones.



PURINJECT 2C THIX

Fast reacting 2 component urethane thixotropic injection resin for stopping strong water ingress.

Two component hydrophobic system injected with a one component pump

PURINJECT 2C ELASTIC LV

Two component, low viscosity, polyurethane elastomeric injection resin for the elastic sealing of dry and wet dynamic cracks in concrete structures. Slow reaction to an elastic resin (pot life: 45 min). Injection with a one component pump.



PRODUCT RANGE

CHEMICAL INJECTION RESINS

ACRYLIC BASED

Leaksealing

ACRYLINJECT ELASTIC

Elastic methacrylate based injection system for sealing and consolidation works in presence of water. In wet or dry conditions, the volume of the gel increases or decreases in a reversible manner assuring perfect waterproofing and perfect adhesion.

ACRYLINJECT R

Methacrylate based injection system for sealing and consolidation works in presence of water. In wet or dry conditions, the volume of the gel increases or decreases in a reversible manner assuring perfect waterproofing or injection of preinstalled injection hose, or channels in membranes.



Geotechnical soil stabilisation

ACRYLINJECT OG

Non-toxic, methacrylate based injection system for sealing and consolidation works in presence of water. The low viscosity of the product assures high fluidity. It's a hydrophilic system with a controlled set time



UREA SILICATE BASED

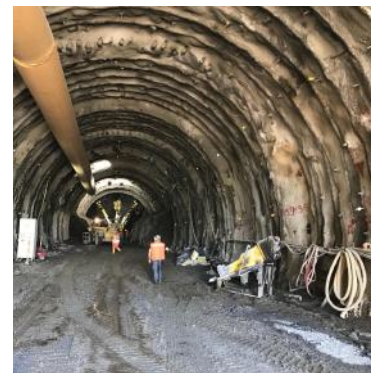
Two component system injected with a two component pump

SILINJECT 2C FOAM

Organo-mineral, non-flammable two-component foam for filling cavities, sealing and hardening in tunnelling and mining.

SILINJECT 2C FLEX

Non-foaming, fast-curing, elasticized silicate - injection resin for hardening fissured and fractured mountainous zones in tunnelling and mining.



SILINJECT 2C THIX

Organo-mineral, non-flammable two-component thixotropic resin for anchor bolting in tunnelling and mining.



PRODUCT RANGE

GEOTECHNICAL INJECTION RESINS

POLYURETHANE BASED

Georesin

GEORESIN is a structural two component polyurethane foam which - injected into voids beneath concrete slabs, walkways, foundations, walls, etc. - stabilises the underground and lifts it to the desired height without excavation.

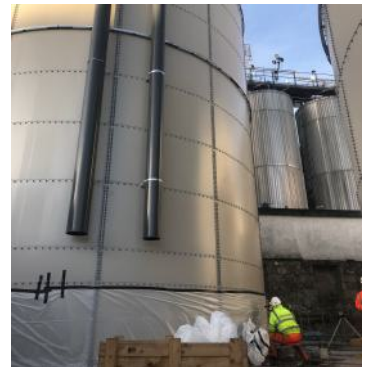
GEORESIN 035
GEORESIN 055



Georesin High viscosity

GEORESIN is a structural, high-viscosity, two-component polyurethane foam that, when injected into voids beneath concrete slabs, walkways, foundations, walls, and similar structures, stabilizes the substrate and lifts it to the desired height without requiring excavation.

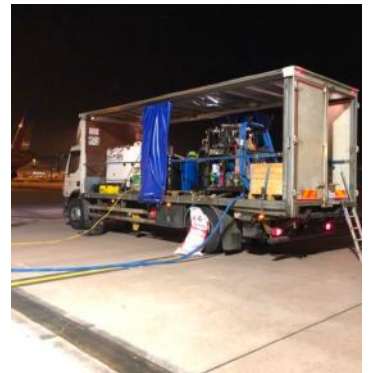
GEORESIN 035 HV
GEORESIN 055 HV



Georesin Cavity filling

GEORESIN (Cavity Filling) is a structural two-component polyurethane foam system, designed for undersealing and void filling under concrete slab sections. The slow speed reactivity profile allows for excellent flow characteristics when used as an undersealing and void fill material. It will run and level itself and expand slowly with low heat.

GEORESIN 035 CF



PRODUCT RANGE

MISCELLANEOUS

SWELL JOINTS

Polymer based

HYDROSTOP

HYDROSTOP is a hydrophilic, 100% expansive polymer waterstop for the sealing of concrete construction, concrete-steel joints and underground precast elements. HYDROSTOP is standard delivered with a swell retardant coating. Free swelling: 250%.



Bentonite based

BENTOSTOP

Hydrophilic bentonite-butyl swell joint for the sealing of concrete construction joints or to be used as a system component in a bentonite clay liner or clay panel waterproofing system. Free swelling: 350% - 400%. Use a metal net for vertical applications.



HIGH PERFORMANCE COATING

100% Pure polyurea

UREASPRAY 400

2 component, 100% pure aromatic, hot sprayed polyurea coating with excellent chemical and mechanical properties.



PRODUCT RANGE

MISCELLANEOUS

WATERPROOFING

Sprayed Tunnel Membrane

STM SEAL

STM Seal is an elastic, polymer based spray applied waterproofing membrane, predominantly used in (below grade waterproofing) and tunnelling. Waterproofing membrane for application on sprayed or cast in situ concrete.



Crystallisation of concrete

CRISTALPROOF ADMIX

System for waterproofing concrete in its entirety by crystallisation, designed to improve the properties of the concrete. Waterproofs concrete effectively and reduces shrinkage cracks.

CRISTALPROOF LI

System for waterproofing concrete by crystallisation, which can be applied as a slurry, powder or spray.



CRISTALPROOF WATERSTOP

For stopping water leaking through cracks and anchoring. Non-shrink, high-bond, hydraulic cement, with fast-setting (2 minutes) waterproofing action by crystallisation.



PRODUCT RANGE

CHEMICALS FOR TUNNELLING AND CIVIL ENGINEERING

Polymers

info@acochem.com

Resins

info@acochem.com

Defoamer

info@acochem.com

